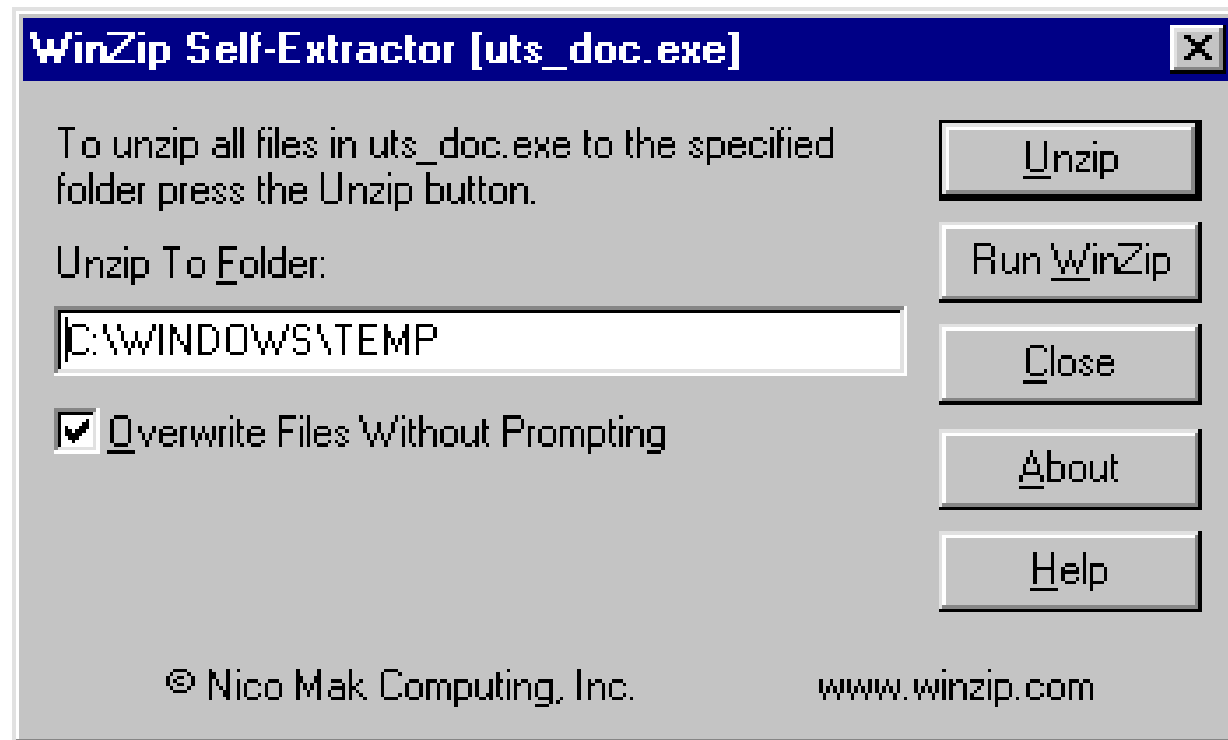
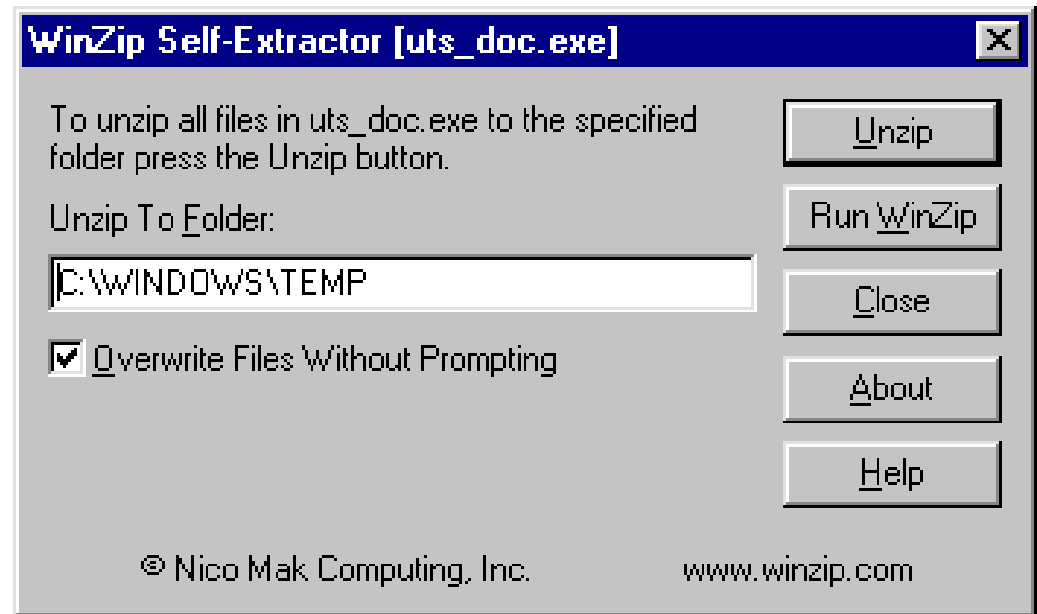


# 32 Bit INFOConnect Installation



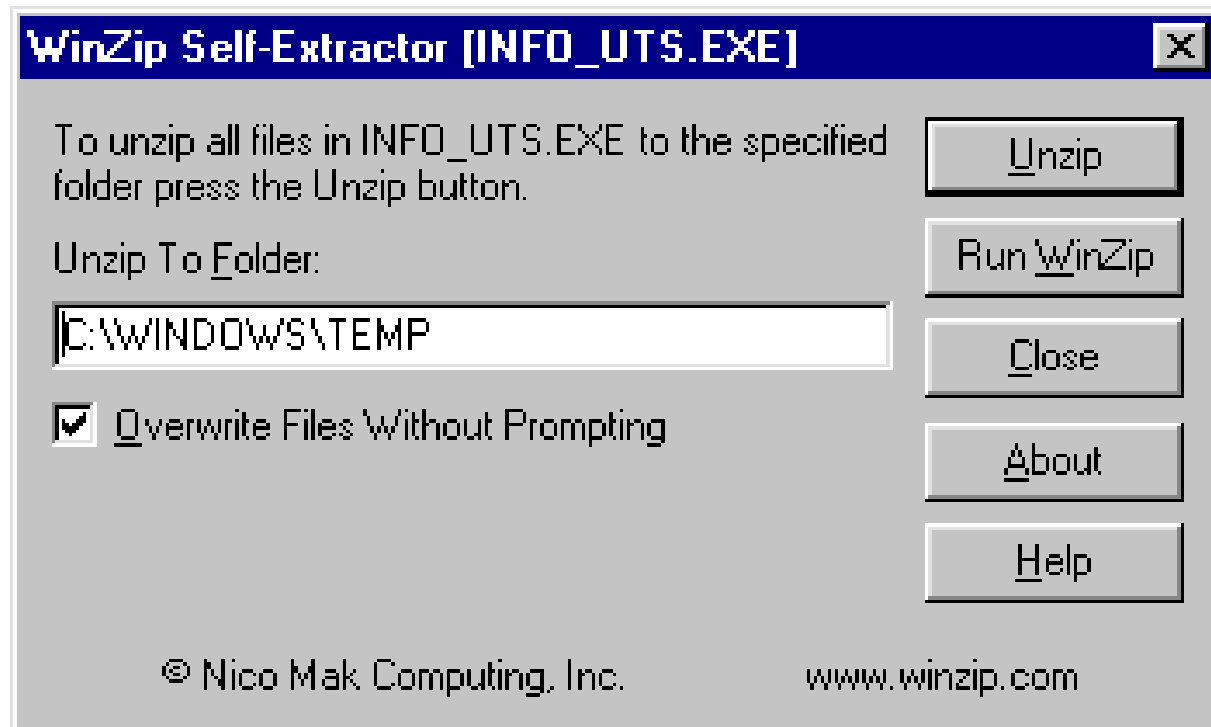
Ensure the Unzip To Folder text box will  
unzip to C:\WINDOWS\TEMP and click on Unzip

# 32 Bit INFOConnect Installation



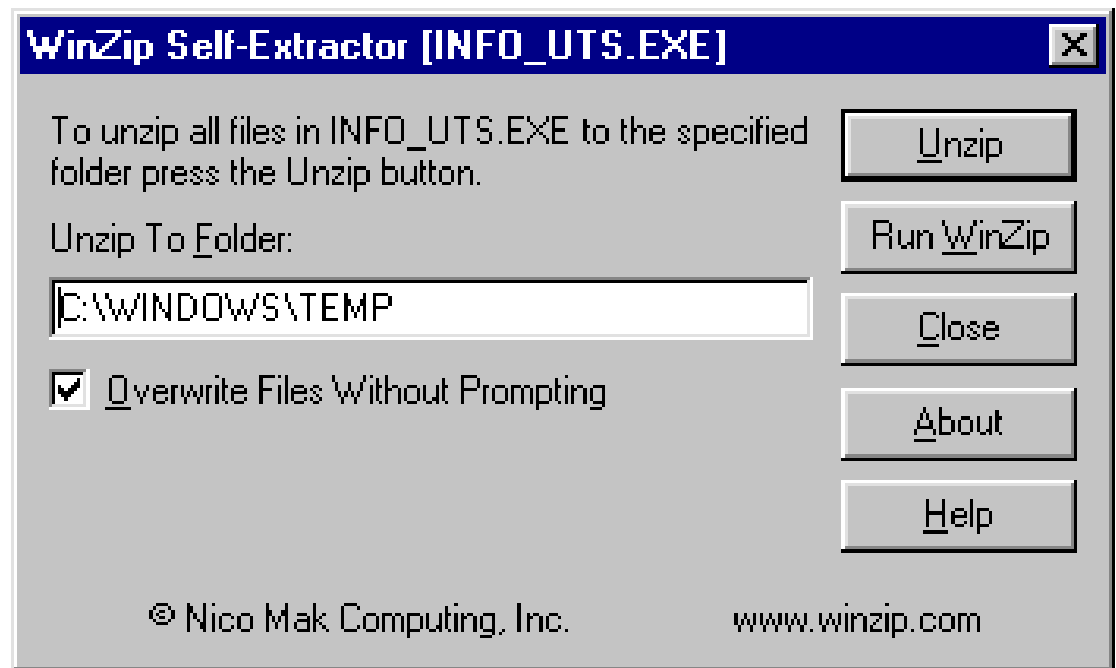
Click OK on the WinZip Self-Extractor dialogue box and click Close on the WinZip Self-Extractor [uts\_doc.exe] dialogue box.

# 32 Bit INFOConnect Installation



Ensure the Unzip To Folder text box will  
unzip to C:\WINDOWS\TEMP and click on Unzip

# 32 Bit INFOConnect Installation



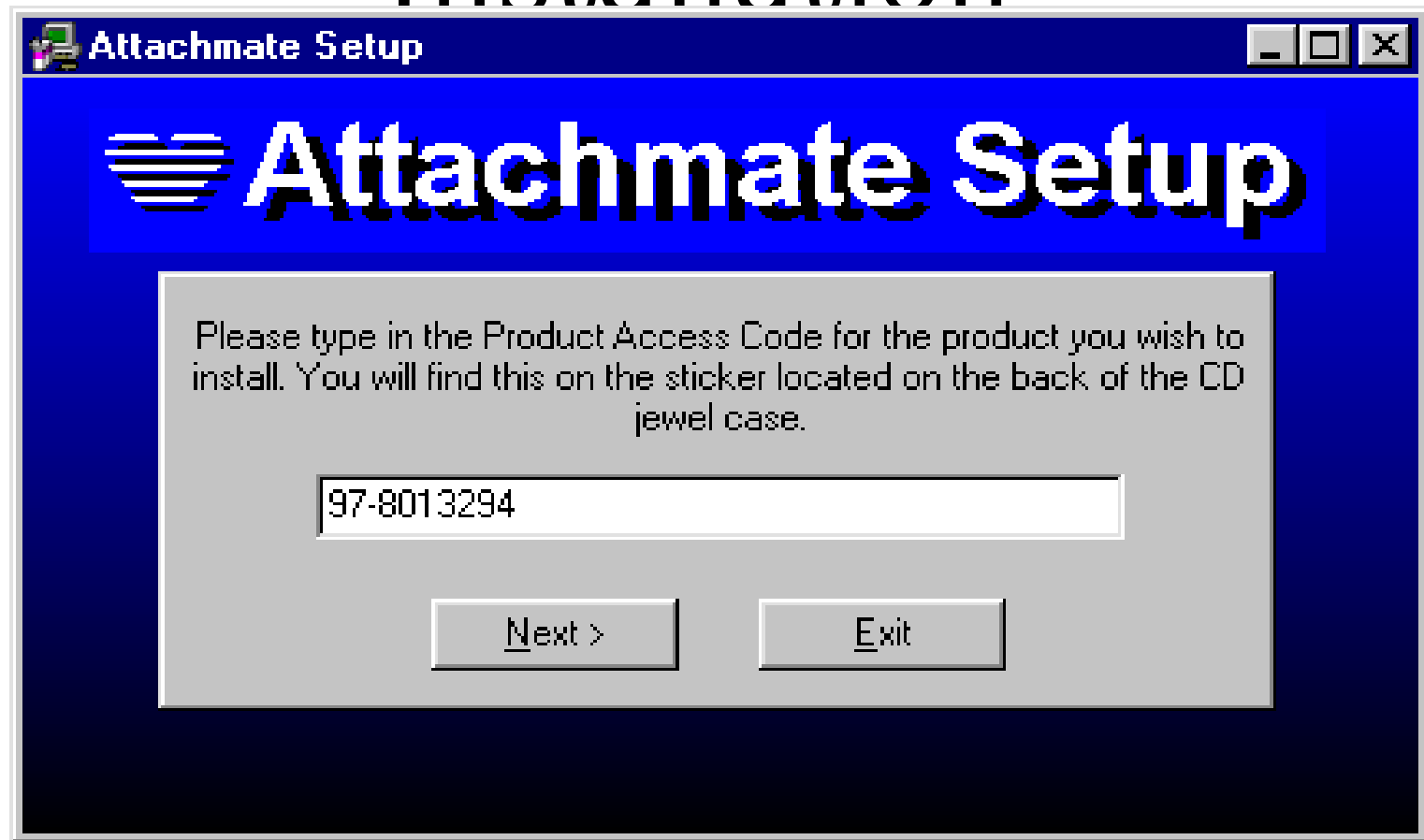
Click OK on the WinZip Self-Extractor dialogue box and Close on the WinZip Self-Extractor [INFO\_UTS.EXE] dialogue box.

# 32 Bit INFOConnect Installation



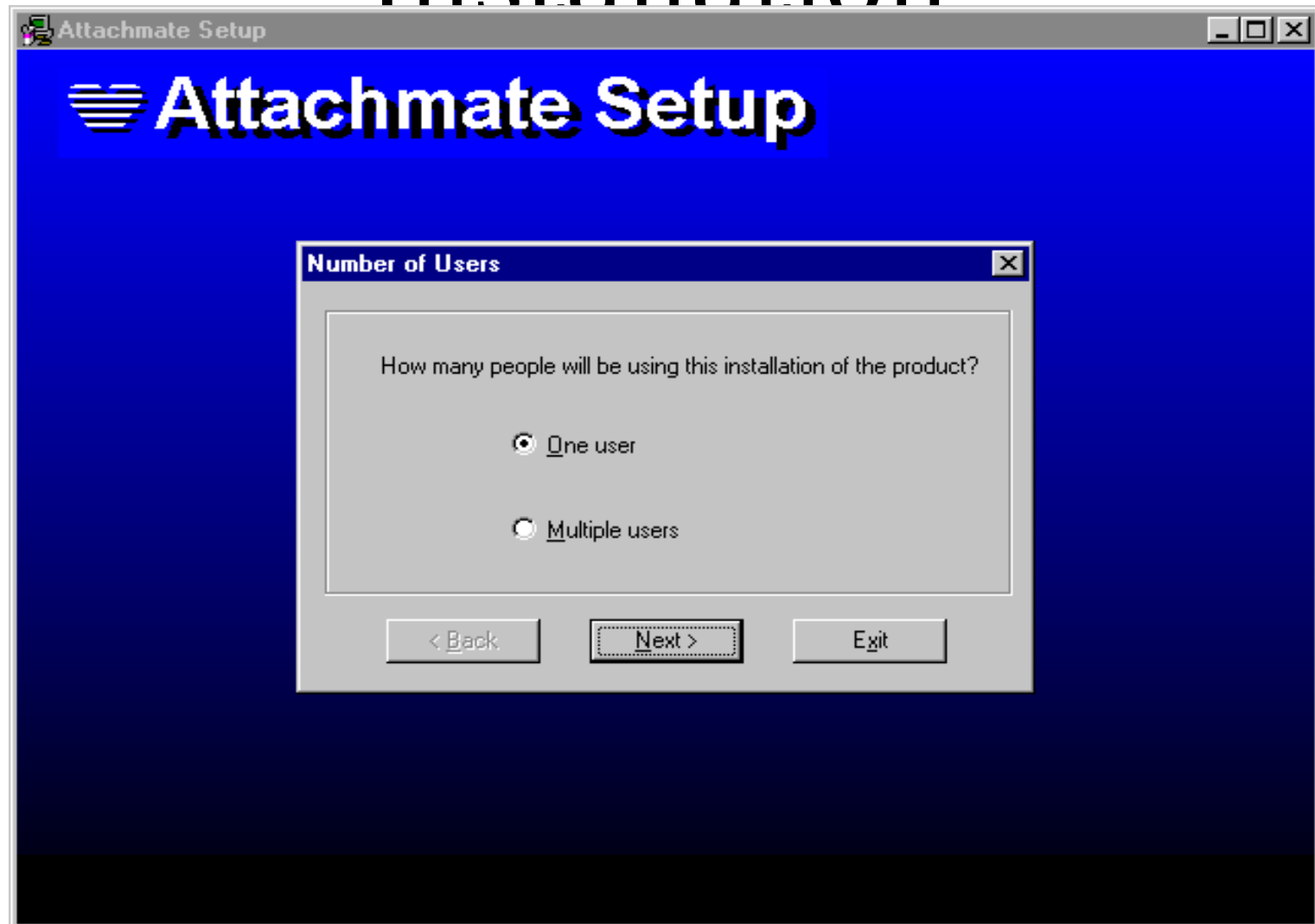
Start the installation by executing setup.exe from the C:\WINDOWS\TEMP\32 directory.

# 32 Bit INFOConnect Installation



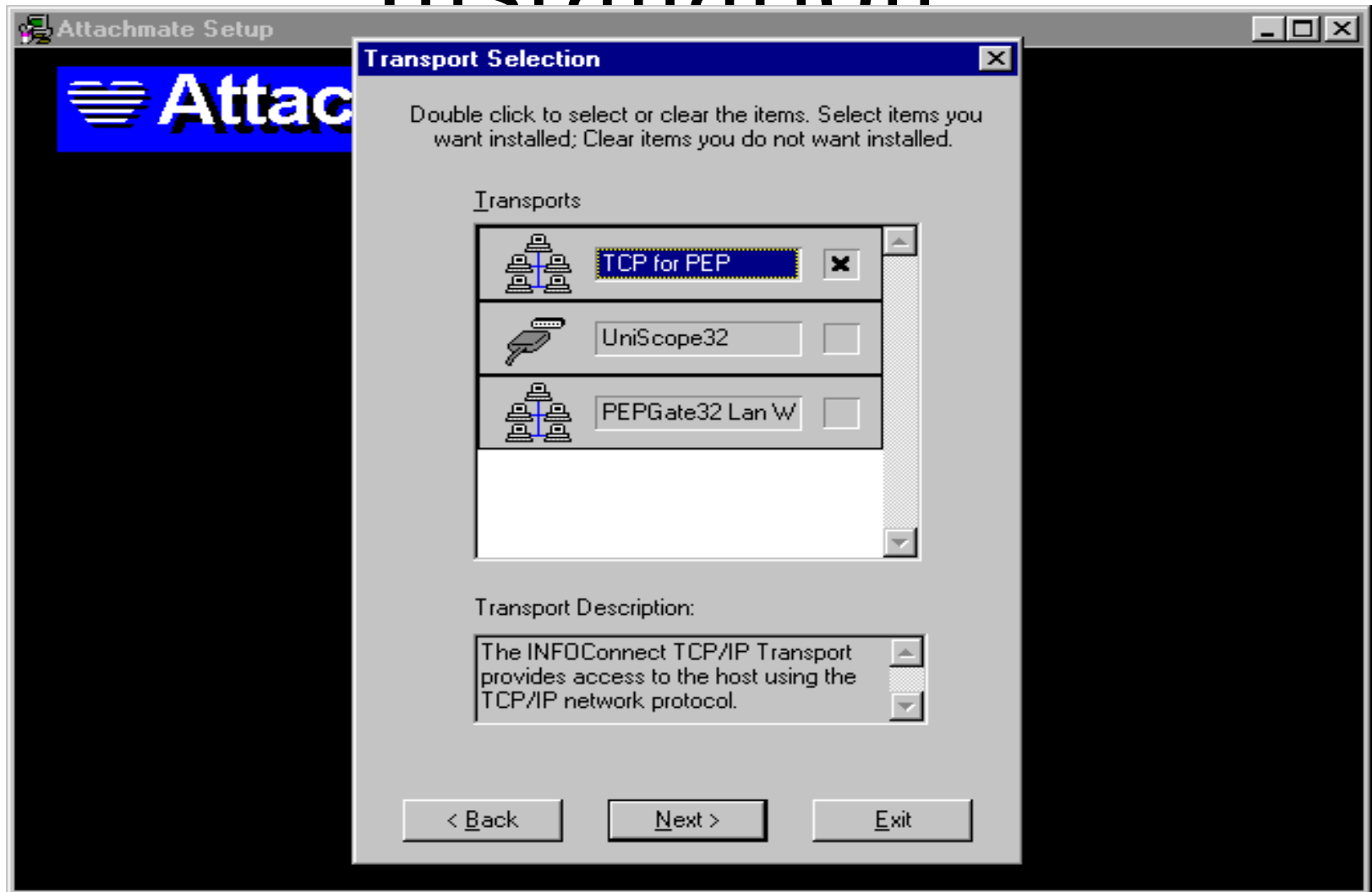
Enter 97-8013294 and click Next >.

# 32 Bit INFOConnect Installation



Select "One user" and click on Next  
>.

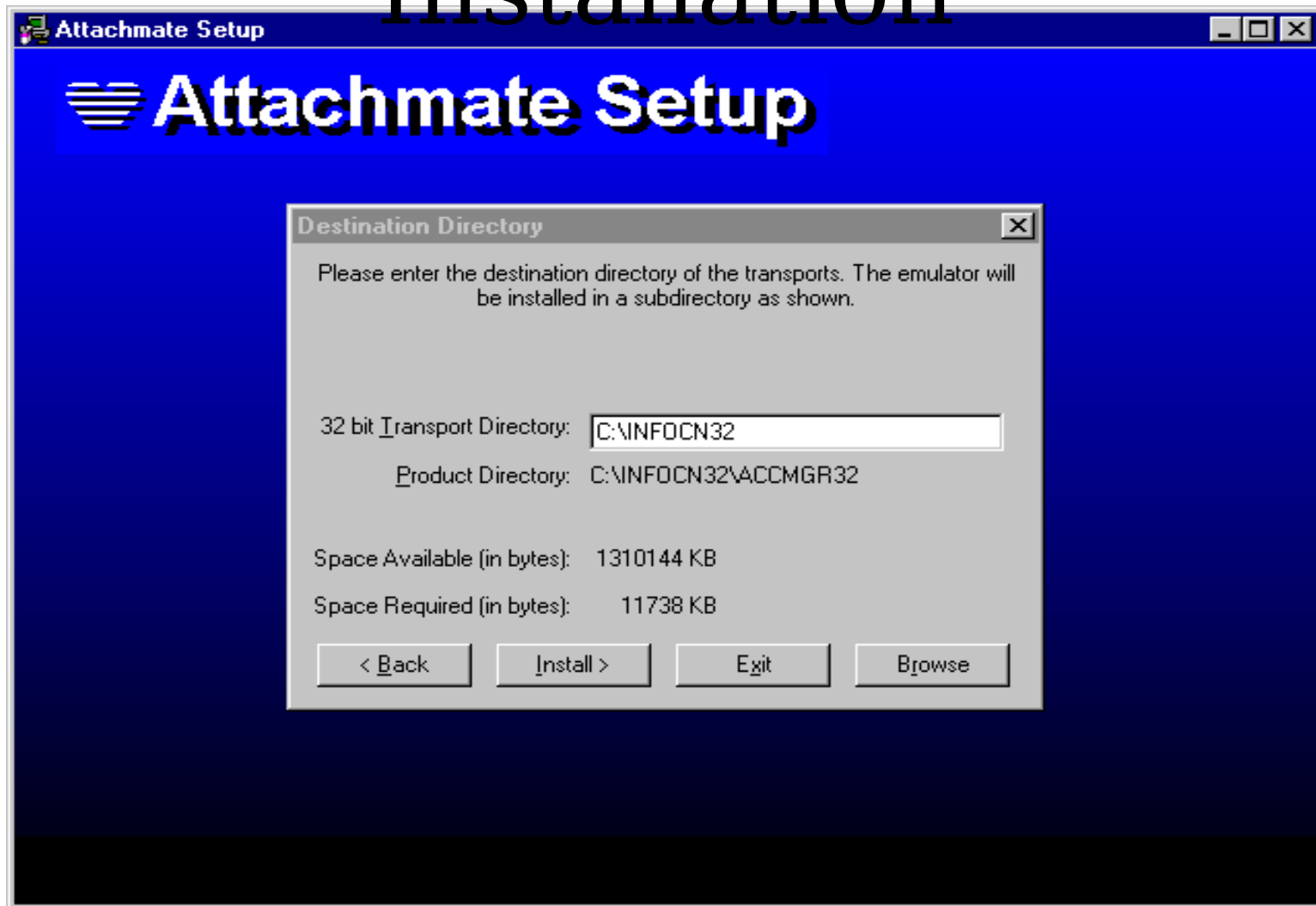
# 32 Bit INFOConnect Installation



Select "TCP for PEP" and click on Next >.

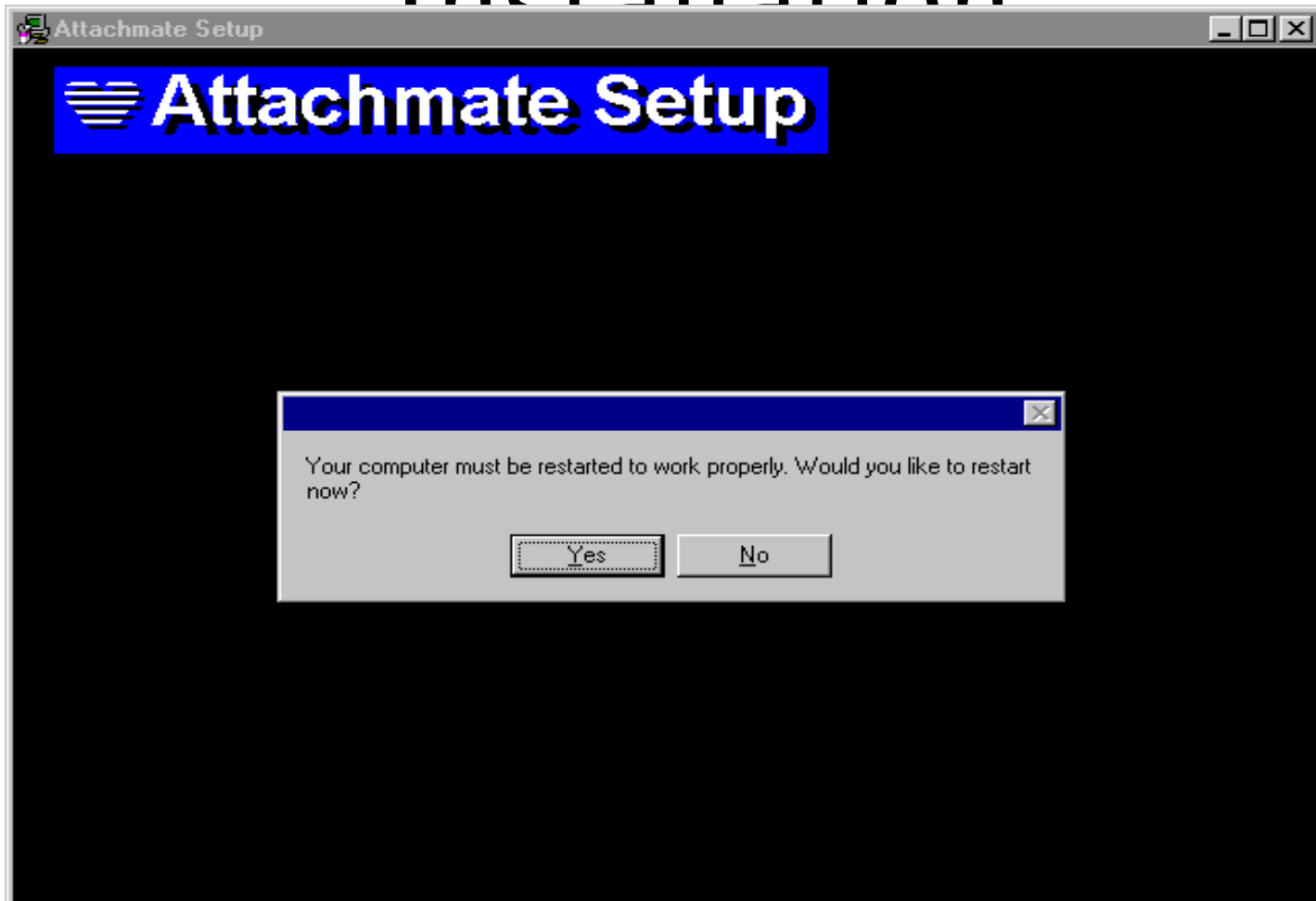


# 32 Bit INFOConnect Installation



Accept default directory and click on Install ↗.

# 32 Bit INFOConnect Installation



Select "Yes" if this dialogue box is displayed. Restart your computer even if this box is not displayed.